

Sleep Cardiopulmonary Coupling Analysis




Patient and Study Information

Patient ID:	HJ.97002-1	Study Date:	10/05/2008
Name:	Li-Chun-Yang	Sex:	Male
BMI:	N/A	PSQI Score (6):	N/A
ESS Score (10):	N/A	CHQ (4):	N/A
Sleep quality of study night:	Good	Wake/stay up for more than 30 minutes	NO
Bed Time:	21:50:00	Wake-Up Time:	04:50:00
		Total Sleep Time (TST):	7 Hours 0 Minutes

Study Summary

Sleep Onset: 0 Hours 6 Minutes

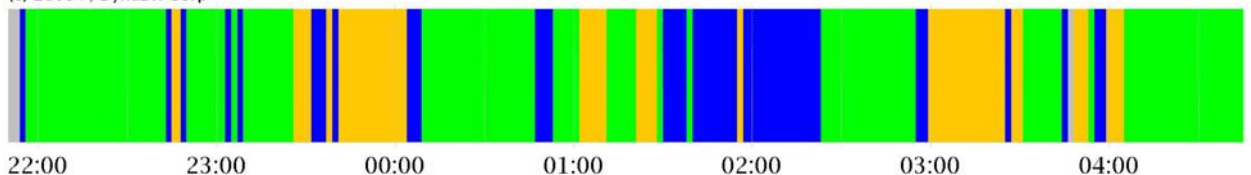
Sleep Apnea Detection	Index	Proportion to TST	Apnea Severity Reference
Estimated AHI using Cardiopulmonary Coupling Analysis (AHI/CPC)	0.0 (/Hour)	0%	Normal - AHI/CPC 0~5 Mild - AHI/CPC 5~15 Moderate - AHI/CPC 15~30 Severe - AHI/CPC >=30
Central	N/A	0%	N/A
Obstructive	N/A	0%	N/A

Sleep Quality Evaluation	Duration Time	Proportion to TST	Healthy Performance Reference
 Stable Stage	3 Hours 51 Minutes	55.0%	Above 41.4%
 Unstable Stage	1 Hours 37 Minutes	23.0%	Below 45.5%
 Paradoxical Stage	1 Hours 32 Minutes	22.0%	Below 25.8%

Whole Night Sleep Status Diagram

■ Stable Stage
 ■ Unstable Stage
 ■ Paradoxical Stage
 ■ Apnea Alike
 ■ Unknown

(c) 2005+, DynaDx Corp



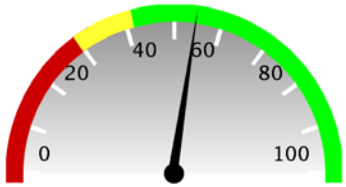


Sleep Status Statistical Analysis

Good

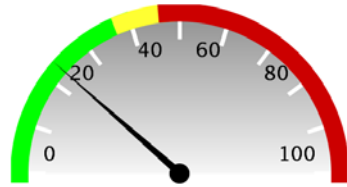
Fair

Poor



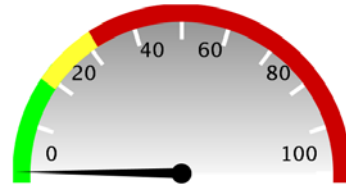
55 %

(c) 2005+, DynaDx Corp



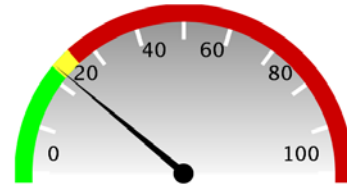
23 %

(c) 2005+, DynaDx Corp



0 %

(c) 2005+, DynaDx Corp



22 %

(c) 2005+, DynaDx Corp

Stable Stage

Unstable Stage

Apnea Alike

Paradoxical Stage