

Sleep Cardiopulmonary Coupling Analysis




Patient and Study Information

Patient ID:	HJ.97005-1	Study Date:	10/16/2008
Name:	Lin-Wu-Xiong	Sex:	Male
BMI:	N/A	PSQI Score (6):	N/A
ESS Score (10):	N/A	CHQ (4):	N/A
Sleep quality of study night:	Good	Wake/stay up for more than 30 minutes	NO
Bed Time:	23:30:00	Wake-Up Time:	07:55:00
		Total Sleep Time (TST):	8 Hours 25 Minutes

Study Summary

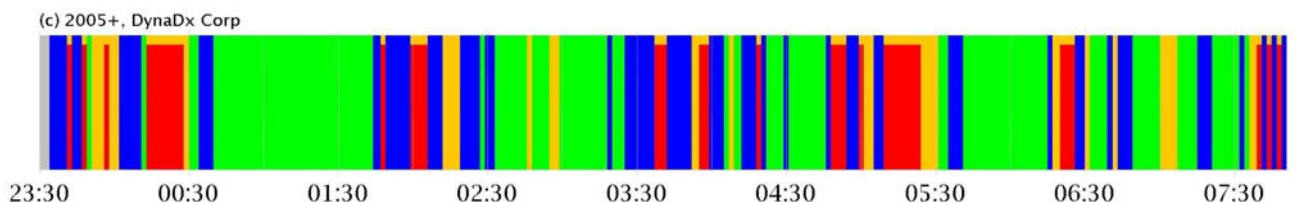
Sleep Onset: 1 Hours 10 Minutes

Sleep Apnea Detection	Index	Proportion to TST	Apnea Severity Reference
Estimated AHI using Cardiopulmonary Coupling Analysis (AHI/CPC)	3.8 (/Hour)	15%	Normal - AHI/CPC 0~5 Mild - AHI/CPC 5~15 Moderate - AHI/CPC 15~30 Severe - AHI/CPC >=30
Central	N/A	3%	N/A
Obstructive	N/A	12%	N/A

Sleep Quality Evaluation	Duration Time	Proportion to TST	Healthy Performance Reference
 Stable Stage	3 Hours 47 Minutes	45.0%	Above 41.4%
 Unstable Stage	2 Hours 16 Minutes	27.0%	Below 45.5%
 Paradoxical Stage	2 Hours 26 Minutes	29.0%	Below 25.8%

Whole Night Sleep Status Diagram

■ Stable Stage
 ■ Unstable Stage
 ■ Paradoxical Stage
 ■ Apnea Alike
 ■ Unknown



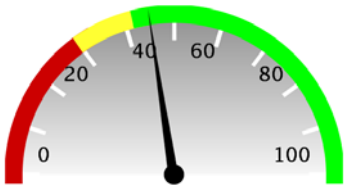


Sleep Status Statistical Analysis

Good

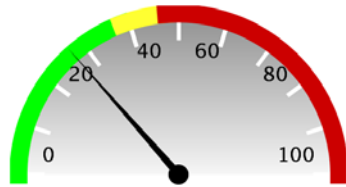
Fair

Poor



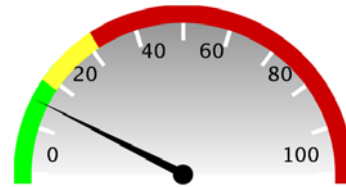
45 %

(c) 2005+, DynaDx Corp



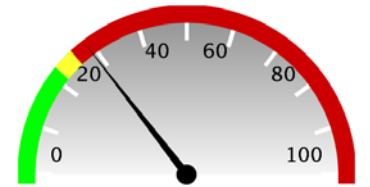
27 %

(c) 2005+, DynaDx Corp



15 %

(c) 2005+, DynaDx Corp



29 %

(c) 2005+, DynaDx Corp

Stable Stage

Unstable Stage

Apnea Alike

Paradoxical Stage